



# TurbiTechw<sup>2</sup> LA

## Suspended Solids Sensor

PRODUCT DATASHEET

### APPLICATIONS

Mixed Liquor  
Aeration Basin  
Oxidation Ditch  
Returned Activated Sludge  
Surplus Activated Sludge

### MEASUREMENT PRINCIPAL

Light Attenuation  
Wavelength 860nm

### FEATURES

Fully Automatic Self Cleaning  
Flexible Mounting System  
Large Optical Surface

### BENEFITS

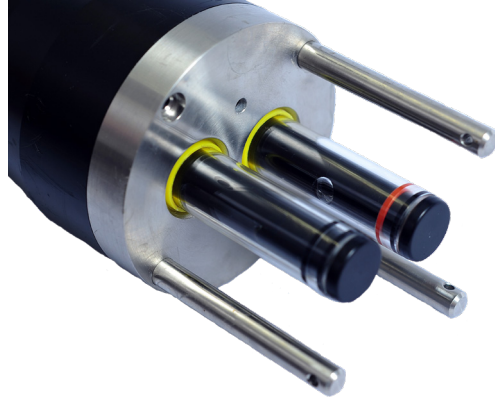
Automated Aeration Control  
Low Cost of Ownership

### COMPATIBLE MONITOR

7300w<sup>2</sup> Monitor

### ALTERNATIVE SENSORS

TurbiTechw<sup>2</sup> HR  
SoliTechw<sup>2</sup> IL



The TurbiTechw<sup>2</sup> LA Sensor has been designed for use in aeration systems monitoring suspended solids also known as mixed liquor suspended solids or activated sludge where solids are typically in the range of 1,500 to 3,500 mg/l.

The sensor can also measure Returned Activated Sludge (RAS), Surplus Activated Sludge (SAS) and suspended solids turbidity. The fully automatic self cleaning system that manual intervention on routine is not required.

The large optical surface and sample volume combine to ensure that the sensor is providing information that is reliable and representative of solids present in the process. Deposits of fats and grease on the sensing area do not prevent the sensor from measuring unlike sensors with small optical surfaces. In addition, the sensor incorporates a self cleaning mechanism that ensures the optical surfaces are kept clean at all times, the cleaning system is designed to avoid problems with ragging and does not smear the optical system.

Call us on + 44(0) 1726 879800 [www.partech.co.uk](http://www.partech.co.uk)



# TurbiTechw<sup>2</sup> LA

## Suspended Solids Sensor

### PRODUCT SPECIFICATION



#### Physical

Dimensions  
Weight  
Protection Class  
Enclosure Material  
Cable Entries  
Wetted Parts

Cable Type  
Cable Length  
Service Requirement

#### Environmental Data

Operating Temperature

#### Interface to Monitor

Power Supply  
Sensor Output

#### Measurement

Range  
  
Accuracy  
Measurement Principle  
Wavelength  
Pressure Rating (Depth)  
Flow Rate

#### Units

#### Mounting

Installation Type  
Mounting Shaft  
Handrail Attachment

470 x Ø80 mm  
2.2 kg (inc 10 metres of cable)  
IP68  
Black Acetal Co-Polymer  
Integral Cable Gland  
Black Acetal, 316 Stainless Steel, Glass, Polyurethane, Nitrile  
4 core, 2 Twisted Pair, 9 mm O/D Polyurethane Coated  
10 metres standard, 100 metres maximum  
Automatic Self Cleaning  
Seal Service every 3500 cleans (application dependent)

0 to +50°C

12VDC from Monitor  
ModTechw<sup>2</sup>, RS485

0 - 20,000 mg/l  
Not suitable for measuring <2,000 mg/l  
±5% of reading or 250 mg/l whichever is greater  
Light Attenuation  
860 nm Infrared  
1Bar or 14.5 psi  
Not affected by flow rate, avoid dead spots and extreme turbulence  
User Selectable mg/l, g/l, ppm, %SS, FAU

The actual measuring range will depend on the nature of the sample being monitored.

Dip  
1.0 to 3 metres in 1 metre increments  
Contact Partech for a full range of mounting options

#### Order Codes

##### Part No Description

- |        |   |
|--------|---|
| 223617 | TurbiTechw <sup>2</sup> LA Sensor<br>(Cable Length: 10 metres, Nitrile Seals) |
| 223872 | TurbiTechw <sup>2</sup> LA Sensor<br>(Cable Length: 20 metres, Nitrile Seals) |
| 223873 | TurbiTechw <sup>2</sup> LA Sensor<br>(Cable Length: 10 metres, Viton Seals)   |
| 223874 | TurbiTechw <sup>2</sup> LA Sensor<br>(Cable Length: 20 metres, Viton Seals)   |

Publication No: 132239DS-Iss10

The company reserves the right to alter the specification without prior notice. E&OE

Call us on + 44(0) 1726 879800 [www.partech.co.uk](http://www.partech.co.uk)



Address: Rockhill Business Park, Higher Bugle, St Austell, Cornwall PL26 8RA, UK E: [info@partech.co.uk](mailto:info@partech.co.uk)